

News from

Justine

September 2009

WORKSHOPS!

Enjoy an Autumn Bonanza of Art and Fun with *Justine* at Arizona Art Supply & Fountain Hills Artists' Gallery

Arizona Art Supply



4025 North 16th Street in Phoenix

Justine is joining with **Arizona Art Supply** to hold workshops at the wonderful new store at 16th Street and Indian School Road in Phoenix. Students will have the opportunity to attend Justine's popular *Inks and Etching workshops*.

Kicking off the Autumn Bonanza of Demos and Workshops is the Arizona

Art Supply Grand Opening Celebration. Justine will be demonstrating during the Grand Opening.

► Saturday – October 3rd

Ribbon Cutting 9:00 a.m.

Demo's – 10 a.m. to 4 p.m.

Lots of product representatives will be on hand for the opening. Bring a friend and share in the fun!

October

Inks & Etching on Ampersand Scratchbord

Luminous Light & Movement

Composition and light will be discussed as students etch on *Ampersand Scratchbord*. Students will learn how to mix and apply a variety of inks, and liquid acrylics to create dazzling effects.

2-Class Series

Friday – October 9 and 16

12:30 to 4:30 p.m.

Arizona Art Supply in Phoenix

\$80 + Supplies

November

Inks & Acrylics on Ampersand Claybord

Shimmering Light Effects

Explore working with iridescent inks with alcohol as a base for magical effects. Students will learn compositional ideas as they paint on top of the alcohol base layer with acrylics and inks, conserving the base as part of the compositional whole. Think of creating an "under sea world."

2-Class Series

Wednesday – November 11 and 18

1:30 to 4:30 p.m.

Arizona Art Supply in Phoenix

\$70 + Supplies

December

Splash & Play on Ampersand Aquabord

Floral Transparency, Watercolor & Collage

If you are looking to have fun and try something new in watercolor, Justine has the perfect class for you and so do the creative geniuses at Ampersand! Students will combine watercolor washes with collage papers to create the illusion of transparency on floral drawings ... all on *Ampersand Aquabord*.

2-Class Series

Monday – December 7 and 14

12:30 to 4:30 p.m.

Arizona Art Supply in Phoenix

\$80 + Supplies

To Register ✂

Phone 602.264.9514 Mail or walk in 4025 North 16th Street Phoenix, Arizona 85016 – 9 a.m. to 4 p.m. Cash or check only.



Demo Day '09

Saturday October 17th — 9 am to noon

Sponsored by **Fountain Hills Artists' Gallery**

See Justine demonstrate her unique media and techniques

The Art Room
Fountain Hills Community Center
13001 North La Montana Drive

Justine will be with 10 or more artists demonstrating the media they present in their workshops.

Interested potential students pay \$10 at the door to observe demos in

- oil painting • sketch book journaling
- paper sculpture • gouache painting
- inks and acrylics • sculpture • photography and more.

Artists will be offering discounts to students who register for workshops during Demo Day. *Bring a friend and enjoy talking to the artists and seeing all the techniques and mediums!*

New Work!

Justine recently visited the Grand Canyon and is working on a series of 9 x 12" paintings on Ampersand's Claybord. She is using an under painting of inks and alcohol with the iridescent effects reserved as edges. The image is then painted with inks and liquid acrylic.



Sign up for Justine's one-day workshop during Demo Day

"Inks, Light & Movement"

Saturday — October 24

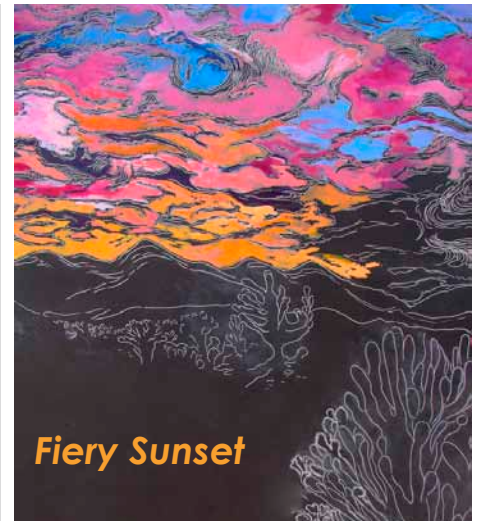
9 a.m. to 4 p.m.

Desert Flower Quilts

16858 East Avenue of the Fountains

Students unable to attend "Demo Day" may sign up at

- Fountain Hills Artists' Gallery
16858 East Avenue of the Fountains
Suite 1031
- By Phone 480.836.9919
- Via Email
www.fountainhillsartistsgallery.com
or
- Call Justine 480.837.2681
- Email Justine
justine.waldie@cox.net



Fiery Sunset

Commissioned work is coming to life ...

Fiery Sunset, Justine's current commission, continues to grow and "glow". The first layer is complete. As the work progresses, more light values will be introduced along with more reds. Etched lines will be added and the cholla "jumping cactus" is in the beginning stages.

Painting Tip

Atmospheric Perspective

This is the method where distance makes shapes smaller and grayer as they go toward the horizon line. Paint atmospheric perspective by using Ultramarine blue with gray or Payne's gray.

Justine Mantor~Waldie 
12419 North Fountain Hills Boulevard
Fountain Hills, Arizona 85268

Justine